

Real Solutions to Real Challenges

Keith Curry

President/CEO, Compton College

Martha Garcia

Superintendent/President, Imperial Valley College

Saturday, January 26, 2020

Community College League of California Legislative Conference

Affordability, Food, Housing Access Taskforce Phase I



[California Community College CEO's Affordability, Food & Housing Access Taskforce](#)

Affordability, Food, Housing Access Taskforce

Phase II

The Affordability, Food, & Housing Access Taskforce was formed to create a space for ideas, best practices, and solutions addressing students' basic needs insecurity.

Working with partners from the Chancellor's Office and the Association of Chief Business Officials, the Taskforce launched phase II of its work focused specifically on affordable student housing.

Affordability, Food, Housing Access Taskforce

Phase II

Specifically, the taskforce is calling state policymakers to:

- Commit new resources to build student residential housing on CCC campuses to address the needs of the homeless-student population;
- Provide substantial one-time funding for colleges to begin the initial planning and development;
- and Provide a greater investment in deferred maintenance, and allow CCC to utilize scheduled maintenance funding to support ongoing maintenance costs for student residential housing.

This session will highlight the taskforce recommendations and the innovative approaches colleges are implementing to provide affordable student housing.

Background

- Ongoing research in higher education has shed light on the prevalence of food and housing insecurities amongst college and university students.
- Three national studies have been conducted by the **HOPE Lab and Hope Center for College, Community and Justice at Temple University** to better understand these challenges.
- Findings from these studies suggest basic needs insecurity can negatively influence students' ability to learn, develop, and succeed in college.
- The studies conclude that institutional, state, and national policies should work to address the barriers presented by poverty in order to improve educational success.



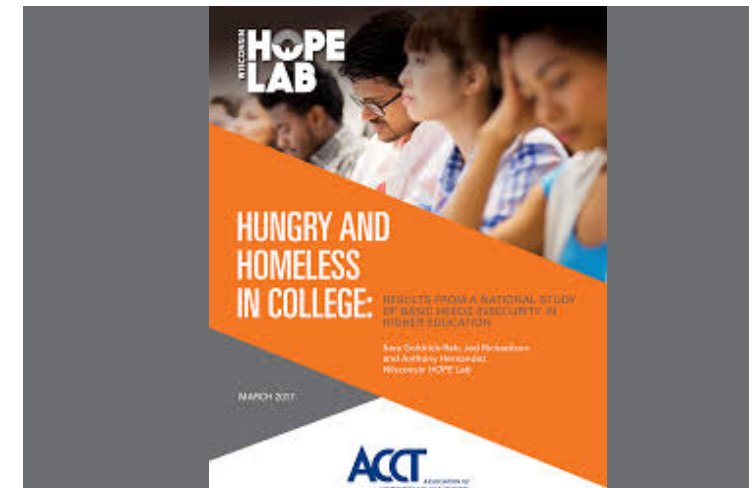
Basic Needs Security Measures

- **Food insecurity** is the limited or uncertain availability of nutritionally adequate and safe foods, or the ability to acquire such foods in a socially acceptable manner. The most extreme form is often accompanied with physiological sensations of hunger.
- **Housing insecurity** includes a broader set of challenges such as the inability to pay rent or utilities or the need to move frequently.
- **Homelessness** means that a person is without a place to live, often residing in a shelter, an automobile, an abandoned building, or outside.



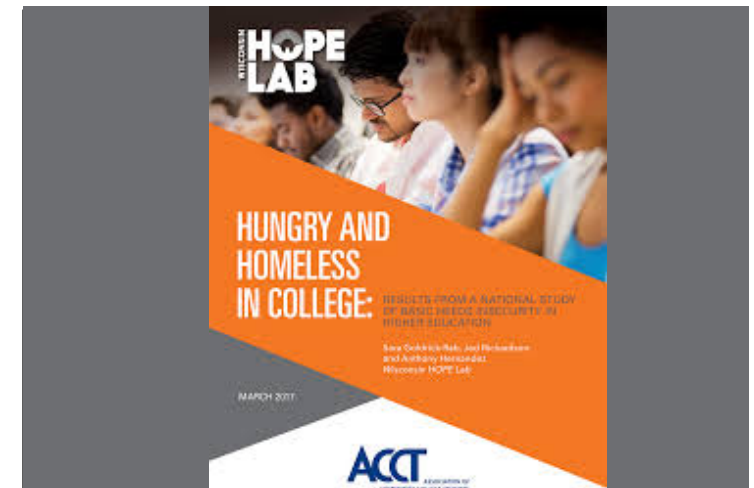
Nationwide Outcomes

- **Food insecurity**
 - 36% of university students were food insecure in the 30 days preceding the survey.
 - 42% of community college students were food insecure, compared to 56% in the 2016 study.
- **Housing Insecurity**
 - 36% of university students were housing insecure in the last year.
 - Housing insecurity affected 46% of community college students, compared to 51% in the 2016 study.
- **Homelessness**
 - 9% of university students were homeless in the last year.
 - 12% of community college students were homeless, compared to 14% in the 2016 study.



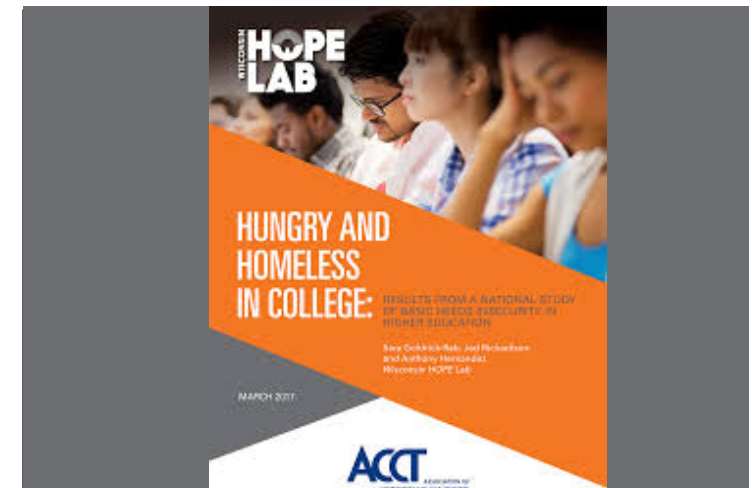
Nationwide Outcomes (Continued)

- The data indicate that basic needs insecurities disproportionately affect marginalized students and are associated with long work hours and higher risk of unemployment.
- The level of academic effort, in and outside the classroom, is the same regardless of whether or not students are dealing with food and housing insecurity.
- It is critically important to match student commitments with adequate support to ensure student success and degree completion.



Nationwide Outcomes (Continued)

- The data indicate that basic needs insecurities disproportionately affect marginalized students and are associated with long work hours and higher risk of unemployment.
- The level of academic effort, in and outside the classroom, is the same regardless of whether or not students are dealing with food and housing insecurity.
- It is critically important to match student commitments with adequate support to ensure student success and degree completion.



Imperial Valley College

Lotus living, rise above Student Housing Project



Our Students

- 200 Self-Identified Homeless Students
 - 7% are employed at IVC under student employment
 - 9% have children under the age of 18 years old
 - 19% have family members 'residing' with them
 - 149 are below the age of 25
- Higher success rates than housed students
- Living in typically in uninhabitable environments or “doubled-up”

Imperial Valley College

Proposal

- Create a Community with Purpose
- Through the IVC Foundation, Imperial Valley College is proposing to develop a pilot tiny living community that will house **56** students and include a community center.
- The goal is to create a resilient tiny home community that will house students for a maximum of two-years.



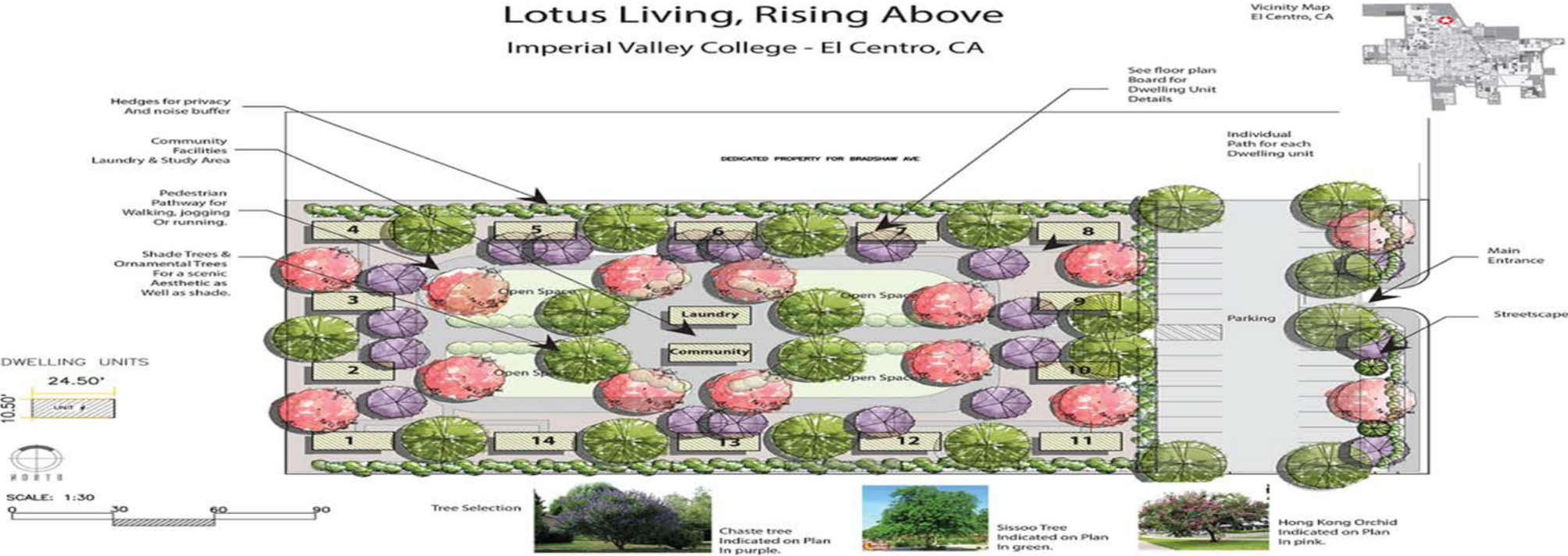
Site: City of El Centro



- About 1.25 acres
- In close proximity to the college (about 4.5 miles)
- Located on 12th and Bradshaw Avenue
- Working with City Manager; there is a commitment to enter into a long-term lease contract with the option to purchase

Imperial Valley College

Tiny Living Community Schematic



Imperial Valley College



Community Shared Spaces

Imperial Valley College

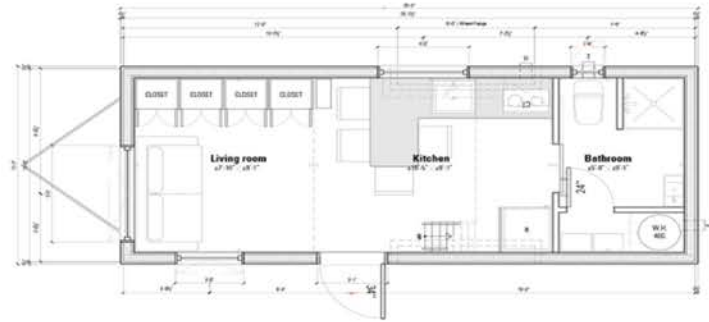


Dwelling units along Pedestrian Loop

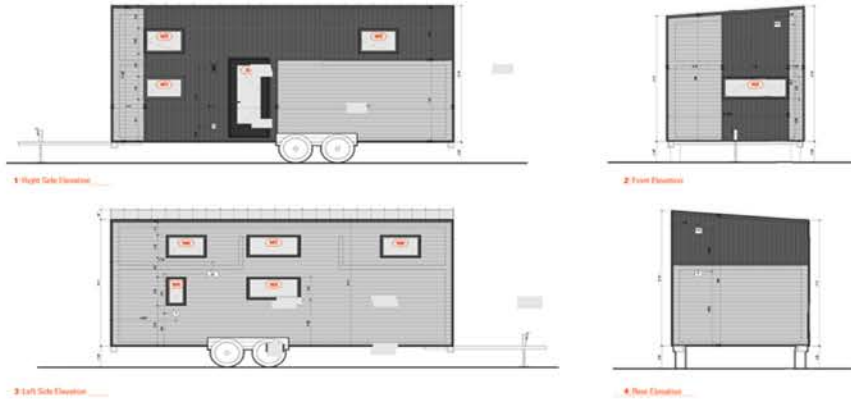
DuBose Design Group Inc.

Imperial Valley College

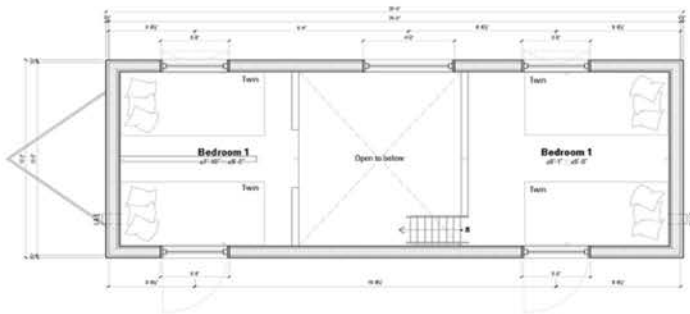
Ground Floor Plan



Exterior Elevations



Loft Floor Plan



Community Floor Plan



- Four Occupants
- Shared Stove, Microwave, Refrigerator and Bathroom

Compton College

*"Compton College has a
great story to tell!"*

– Former First Lady Michelle Obama



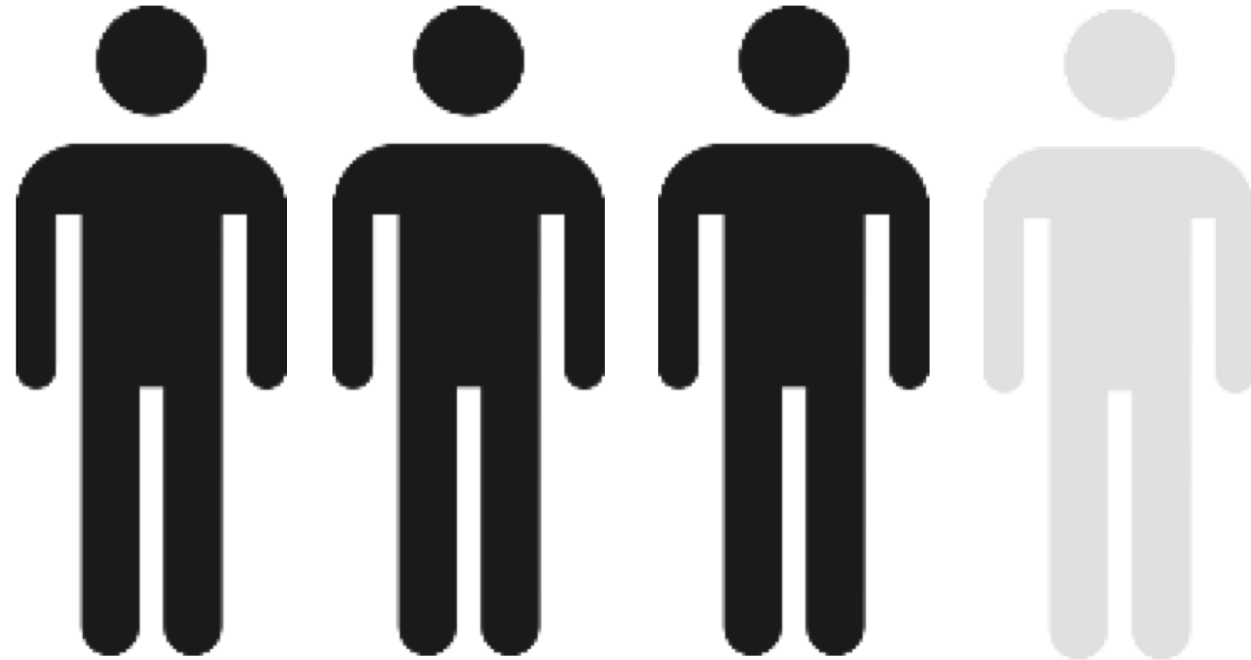
Large Scale of Insecurity

Compton College outpaces other community colleges in housing and food insecurity.

	Food Insecurity	Housing Insecurity	Homelessness
Compton College	59%	68%	18%
Average of 2-year Colleges	50%	60%	19%

Large Scale of Insecurity

3 out of 4 students face some food and/or housing insecurity



Housing Insecure

Several student groups stand out as having high levels of housing insecurity.

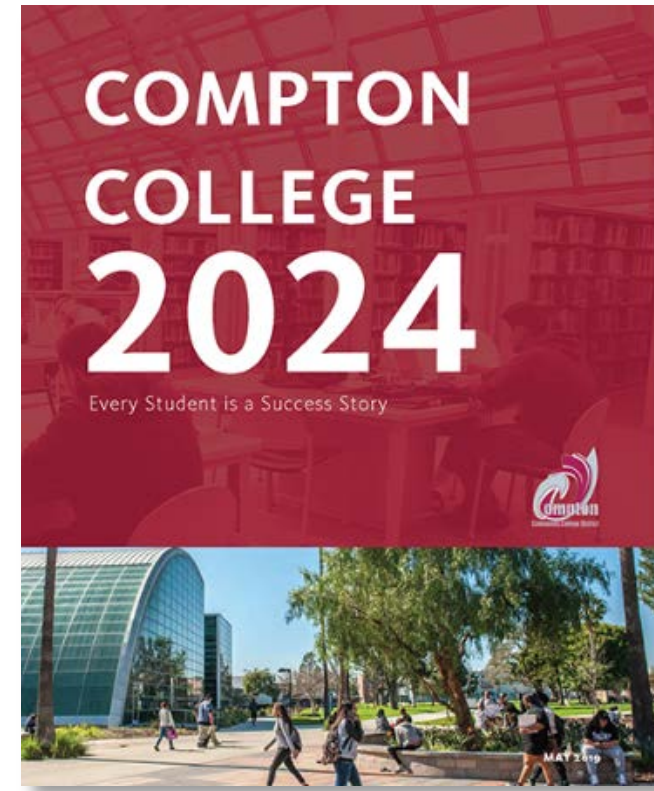
- 85% suffer from a chronic illness
- 85%+ of those 26 or older
- 82% of former foster youth
- 80% of Southeast Asian students
- 77% of students with children
- 77% of those who are employed
- 75% of black/African American students
- 70% of women

Compton College 2024

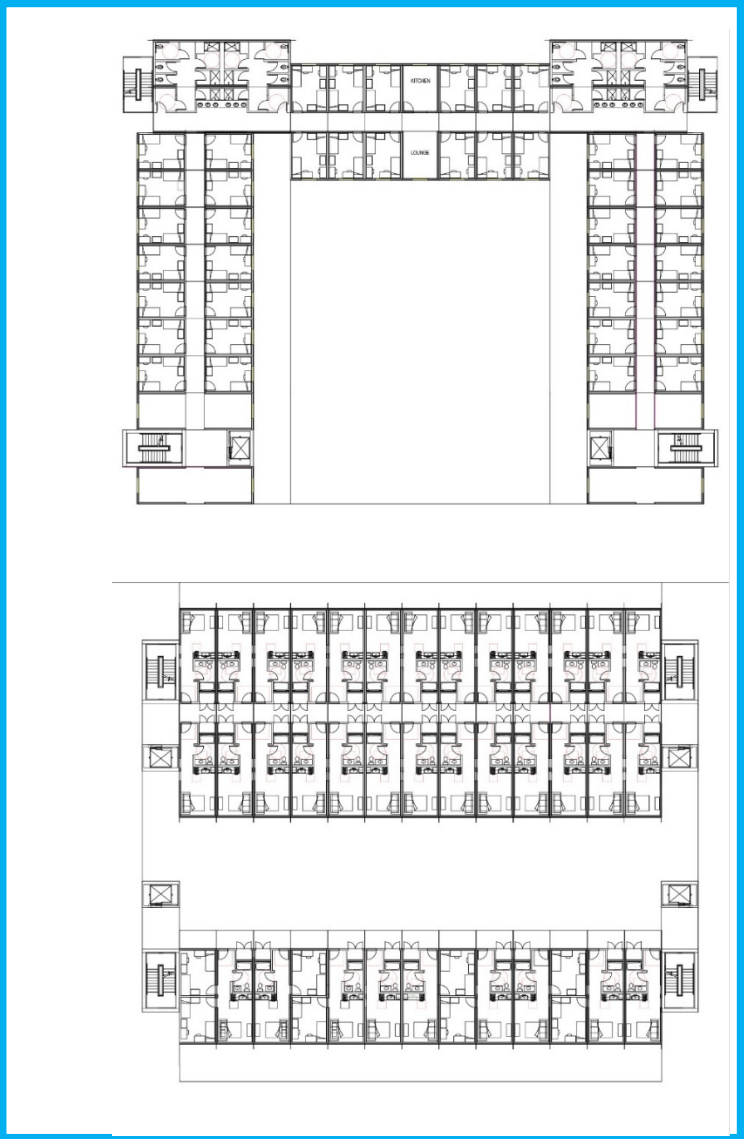
Student Residential Housing Concept

Compton College's Vision

- Merging current and future capacities, attributes, and outcomes to deliver on its mission where diverse students are supported to pursue and attain student success.



Compton College 2024



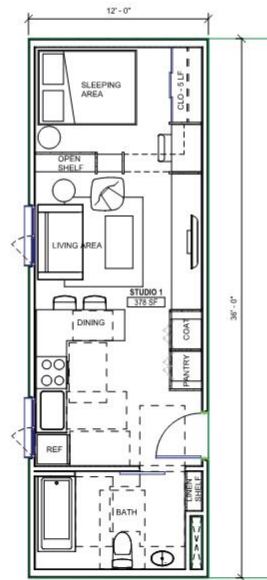
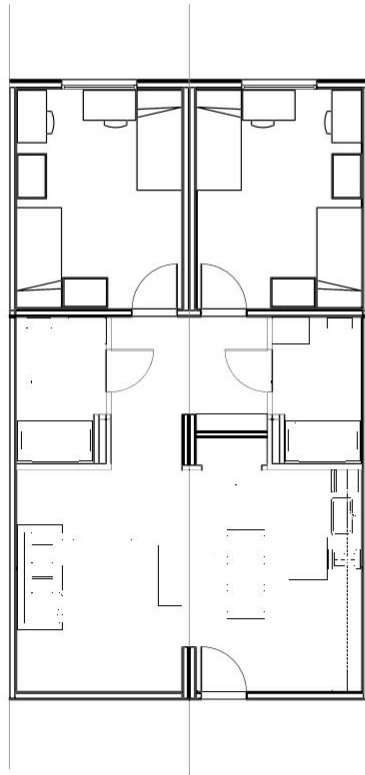
Campus Engagement



Conceptualizing

Modules

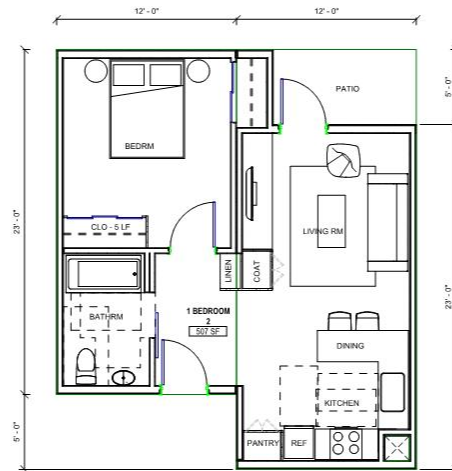
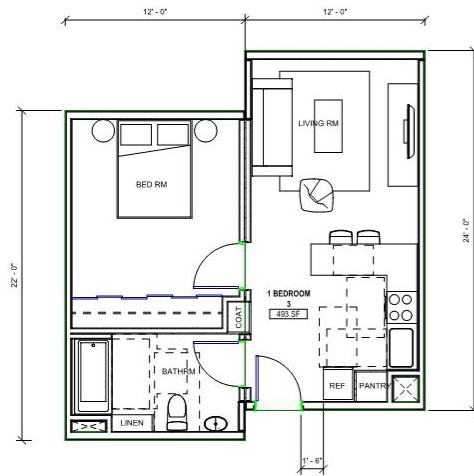
COMBINATORY KIT OF PARTS_DORM SUITES / STUDIOS



Conceptualizing

Modules

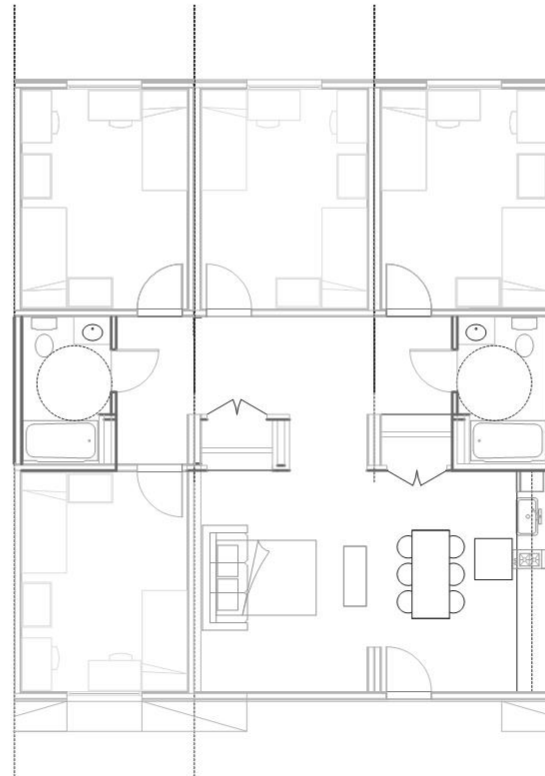
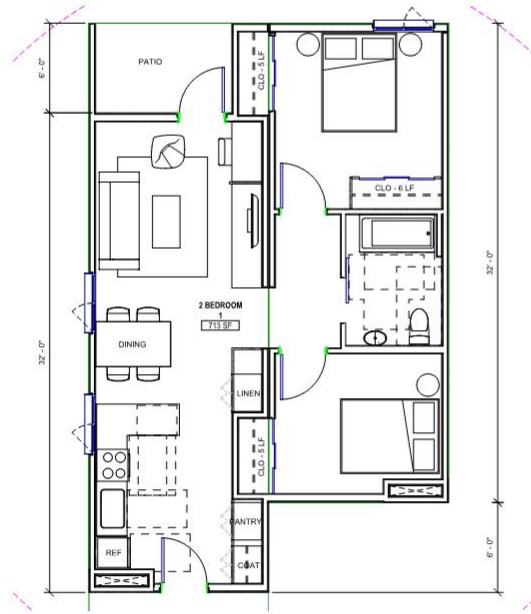
COMBINATORY KIT OF PARTS_1 BR_RA UNITS



Conceptualizing

Modules

COMBINATORY KIT OF PARTS_2BR_FAMILY UNITS / MACRO UNITS



Conceptualizing

Pre-Fabricated Student Residential Housing Design

Multi-faceted Project

- Goal: 540 beds
- Phase I: 100 Beds by 2022

Sample Housing

- Traditional dormitory-style (Singles, Doubles, Triples, Quadruples)
- Family Housing

Demographic

- Students, students with families, nontraditional students, and future Compton College Faculty

Faculty will serve as **preceptors**, living onsite for up to two academic years, potentially attracting diverse pool of applicants for tenure-track faculty positions.

Current Partners



FOUNDATION *for* CALIFORNIA
COMMUNITY COLLEGES



CivicSpark

Gensler

Other Partnerships

Non-Profits

- [Jovenes Inc.](#)
 - Dedicated to helping homeless youth develop pathways for personal and professional growth through their college experiences.
- [The Coalition for Responsible Community Development \(CRCDD\)](#)
 - Sustaining, coordinating, and improving local planning, development and community services that address the needs of low-income residents in South LA.
- [LINC Housing](#)
 - Building and preserving affordable housing, and being a catalyst for community improvement.



Next Steps

- Research and Development Phase for Cost of Prefabricated Units
- With assistance from the Foundation for California Community Colleges, generate a statewide Request for Proposal (RFP) with piggy-back contract language for preliminary Division of State Approved (DSA) prefabricated models.
- The Compton College concept could be the model for other California Community Colleges interested in student residential housing.
- Compton College is currently working on a timeline for implementation and completion.

Draft Housing Recommendations from Affordability Taskforce

1. Commit new non-Prop 98 resources to build student residential housing on community college campuses to address the needs of homeless student populations. Provide substantial one-time funding for colleges to begin the initial planning.
2. Establish baseline ongoing funding for deferred maintenance, and allow community colleges to utilize schedule maintenance funding to support ongoing maintenance cost for student residential housing.
3. Provide one-time non-98 funding for district interested in exploring student residential housing.
4. Earmark a percentage of existing AHSC funding for Community College District Affordable Housing projects.

Draft Housing Recommendations from Affordability Taskforce

5. Support colleges' work with local, county, and student agencies to establish housing options for community college students.
6. Provide districts CEO's with Professional Development regarding public/private partnerships.
7. Support a statewide Request for Proposal (RFP) with the Foundation for California Community Colleges for a piggy-back contract language for preliminary Division of State Approved (DSA) prefabricated models.

Draft Housing Recommendations from Affordability Taskforce

8. Work with the California Community College Chancellor's Office to provide Student Residential Housing fellows at community college campuses.
9. Develop a toolkit for community college CEO's, designed to provide housing models, share pros and cons, and help CEO's find a workable approaches.
10. Make the following changes to Education Code Section 81670:
 - The governing board of any community college district may construct and maintain ~~dormitories~~ student housing in connection with any community college within the district for use and occupancy by students in attendance at the community college, and shall fix the rates to be charged the students for quarters in the ~~dormitories~~ student housing.
 - Notwithstanding California Code of Regulations, title 5, section 57001.5(d), student housing facilities in connection with any community college within the district shall be eligible for funds under the Scheduled Maintenance and Special Repairs program, pursuant to section 84460.

Questions?